



**Innovative Facility for Isotope GENERation with Efficient Ion Accelerator**

Papageorgiou General Hospital

PNG

**Kick-off meeting**

3-4 March 2025

Thessaloniki, Greece



Papageorgiou General Hospital has been a pioneer in the Greek Public Health sector for many years.

- commencement of its operation in August 1999
- established affiliation with Aristotle University of Thessaloniki -School of Medicine in 2004, hosting its Teaching Clinics.
- non-profit private law entity fully integrated into the National Health System

The hospital includes:

- 30 clinics
- 9 collaborative departments
- 10 laboratory centers
- 757 beds

The cornerstone of the hospital's philosophy behind its operation is the provision of high quality and patient-centered healthcare services



Total Personnel

# Main activities & competencies

---

## High-Quality Patient Care

- Adult & paediatric clinical services
- Specialized departments: Radiotherapy, Nuclear Medicine & Experimental and Research Center

## Advanced Infrastructure

- Daily patient attendance: 3.900 patients
- Equipment: PET/CT, MRI, CT, Linacs, HDR brachytherapy, angiography systems

## Research & Academic Integration

- Strong involvement in basic, translational & clinical research
- Integration of technological innovations into clinical practice

## Experimental and Research Center

- Perform experimental *in vivo* protocols
- Conduct vocational training for health-care professionals
- Ongoing training program in microsurgery

## Education & Training

- Continuous staff training on modern technologies
- Joint projects with academia to train future professionals



- Main partner related with applications in healthcare AND pre-clinical evaluation of produced ligand-isotope compounds.

Participation in:

- **WP2, Education, Dissemination, Inclusion and Diversity**
- **WP4, Radioisotope production and radiopharmaceuticals.**

**Leader:**

- **T2.3 (WP2) Secondments and good practices exchange (M25-M48)**

Facilitate the exchange of expertise between IFIGENEIA's partners and research/academia and business/NGO stakeholders of each Hub by preparing a proposal to include targeted exchanges among partners to experience partner's working environments and hands-on learning. Also, address related logistics.

- **T4.5 (WP4) Develop protocols for pre-clinical evaluation of ligand-isotope compound (M19-M48)**

Develop experimental protocols for *in vivo* evaluation of produced ligand-isotope compounds with the support of the DKFZ group.



IFIGENEIA

# IFIGENEIA staff

## Papageorgiou General Hospital

### 1. Program Management Office (PMO)



Maria Bigaki, MBA, PMP®  
Economist, Program Manager  
Papageorgiou General Hospital  
[pmo@papageorgiou-hospital.com](mailto:pmo@papageorgiou-hospital.com)

### 2. Experimental and Research Center (ERC)



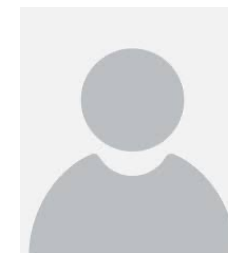
[www.rcph.gr](http://www.rcph.gr)



Chryssa Bekiari, PhD  
Assistant Professor,  
Veterinary School, AuTh  
[chmpekia@vet.auth.gr](mailto:chmpekia@vet.auth.gr)



Georgios Parathyras, MBA  
Experimental surgery nurse,  
Papageorgiou General Hospital  
[mushashi74@yahoo.gr](mailto:mushashi74@yahoo.gr)



PhD student  
(to be hired)

### 3. Medical Physics Department



Kosmas Badiavas, PhD  
Medical Physicist  
Papageorgiou General Hospital  
[badiavas@auth.gr](mailto:badiavas@auth.gr)